

2026

BONANNO

HANDCRAFTED STEEL BICYCLE FRAMES



A maintenance guide

**Why you
should care:
wash and
service your
bike.**



The Essentials

Long rides, daily commutes or cyclocross adventures, they all have one thing in common: the pristine look falls apart, one ride at a time. Whether it's you or a mechanic, it's time to step in and bring the spark back.



Water and lubricants for the long run.

Equip yourself with the right tools. Lubricants like sprayable wax, sheep wool grease, Ballistol Oil, copper grease or likewise products. WD40 is not recommended!

The Spots

1: seat tube

2: head tube

3: top tube



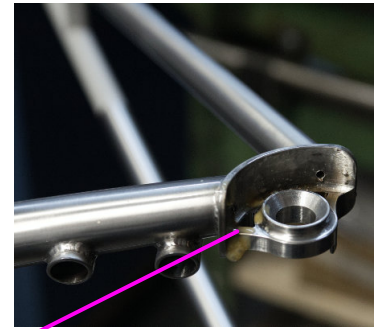
4: seat stays

5: chainstays

6: down tube

We lubricate these areas before a frame leaves the workshop. This helps protect your frame from the inside out. Spot the drill holes!

Dropouts



4: seat stays
2.5mm
drill hole

5: chainstays
2.5mm
drill hole



Fluid Film is key!

BB Shell



- 5: chain stays
- 6: down tube
- 1: seat stay

From the bottom bracket shell, you can access the seat tube, down tube, and chainstays. It's useful to have two different nozzles for your lubricant. The larger nozzle should have a long hose. Insert it fully, and while spraying, slowly pull the hose back out to evenly coat the inside of the tube.



Big nozzle, long hose to pull.

Head tube

- 6: down tube
- 2: head tube
- 3: top tube



hose

nozzle



small nozzle

big hose

Your turn !

Enjoy the season ahead, but start with a service.

A well-maintained bike is a safe and high-performing one. It all starts with keeping it clean. While washing, you naturally pay attention to the details, which helps you spot potential issues early.

We recommend a full service once a year. As part of this, remove the bottom bracket for inspection.

Lubricate the inside of the frame, and apply fresh copper grease before reinstalling the bottom bracket.

It's a bit of work, but the reward is a bike that runs smoothly and stands the test of time.

If you have any questions or need help, we're happy to assist. So your Cicli Bonanno stays in perfect shape, come rain, mud, or puddles.



ADDRESS

Goerlitzer
Straße 52,
10997 Berlin,
FRG

E-MAIL

info@cicli-
bonanno.com

TELEPHONE

+49 (0)30 9837 4544

A PRESTO!